

temperature controlled tunnel through-loader

technical data

At 38 pallets or 63 roll containers, the articulated lorry offers maximum loading capacity for route deliveries and distribution transport.

The through-loading system is particularly advantageous when ramp capacity is scarce. Unnecessary loss of time for unhitching the trailer during loading and unloading is avoided and productivity is increased of more than 10% are possible thanks to the through-loading trailer. The following versions can be offered and adapted to your specific application:

- DLE 11 through-loading with portal doors and tailgate ramp
- DLE 21 through-loading with hinged front ramp
- DLE 31 through-loading with swivelling front ramp and tailgate ramp
- DLE 41 through-loading with sectional door and tailgate ramp

Permissible
total weight: 40,000 kg

Superstructure dimensions:

Outer box length: 6,900 - 8,200 mm
Outer box width: 2,600 mm
Inner box width: 2,500 mm
Outer box height: 2,200 - 2,800 mm

Element widths:

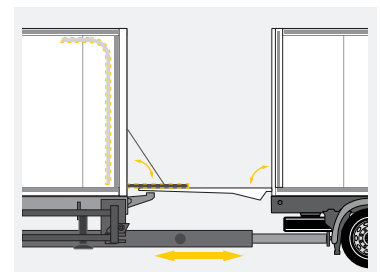
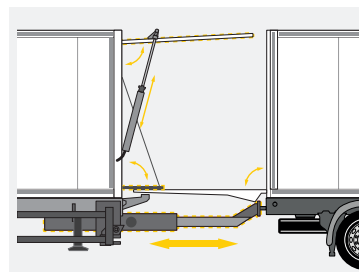
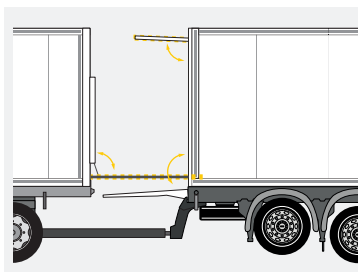
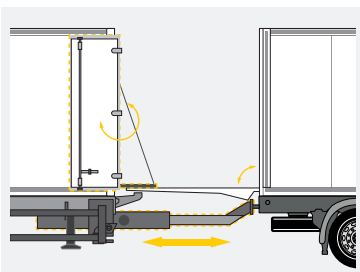
Front wall: 40/60/80 mm
Side walls: 45 mm
Roof: 85 mm
Floor: 100 mm/125 mm

DLE 11

DLE 21

DLE 31

DLE 41



TRG

TDT

TCT

TST

Temperature Controlled tunnel through-loader

Overview of the loading mechanisms:

DLE 11

Portal doors with two or four-door design. Through-loading system suitable for deep-freeze applications. Lorry tail lift serves as a crossover bridge. Internal extension sheet serves as pallet stop and crossover bridge to the truck tail lift. Longitudinal adjustment with manual or pneumatic drawbar locking. Suitable for

DLE 21

flatbed turntable and centre-axle trailers. Hinged front ramp serves as a crossover bridge. Can support forklifts of up to 5.5 tonnes of axle load. Lorry tail lift with upper flap. Longitudinal adjustment with manual or pneumatic drawbar locking. Suitable for flatbed turntable and centre-axle trailers.

DLE 31

Front flap swivels upward. Activated with pneumatic cylinders, including fall protection. Additional weather protection. Lorry tail lift serves as a crossover bridge. Additional cargo area locking function. Internal extension sheet serves as pallet stop and crossover bridge to the truck tail lift. Longitudinal adjustment with manual or pneumatic drawbar locking. Suitable for flatbed turntable and centre-axle trailers.

DLE 41

Front door with fresh delivery and deep freeze sectional door. Manual or electrical drive. Tail lift optional. Rolling shutters for additional weather protection. Internal extension sheet serves as pallet stop and crossover bridge. Rigid or longitudinally adjustable drawbar with manual or pneumatic drawbar locking. Suitable for flatbed turntable and centre-axle trailers.

Optional equipment (examples):

- Longitudinally adjustable transverse partitions
- Air circulation control systems
- Double-decker and load securing systems
- Cold retention systems
- Centralized electrical distribution cabinet
- Lateral/height level control
- Video reversing aid
- Electronic ramp approach aid
- Centralized control tool
- Load securing certificate, DIN EN 12642, Code XL
- ATP certificate
- Pull-out console for line connections
- Temperature recording
- Swivelling rear step
- Spring-loaded roller bumpers

Cranked drawbar



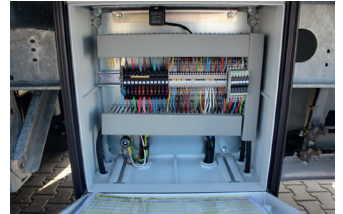
Level control



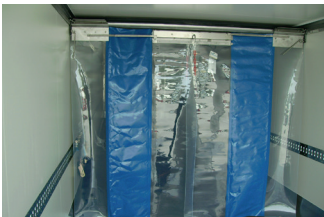
Video reversing aid



Centralized electrical distribution cabinet



Cold retention system



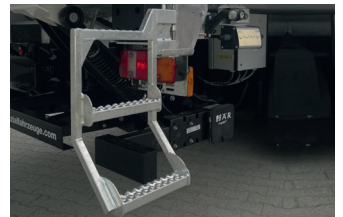
Pull-out console for line connections



Spring-loaded roller bumpers



Swivelling rear step



At ROHR Spezialfahrzeuge, we always work towards our most important goal: consistent, sustainable added value for our customers. We develop and produce our special vehicles according to the individual wishes of our customers and the high standards that distinguish our company from the competition. The competent support provided by our international sales and service network guarantees a high degree of customer satisfaction. Our efficient service centre guarantees flexible, intensive support and ensures the supply of spare and wear parts throughout the entire life cycle of our vehicles.

Customer service

Phone +49 9421-7305 102
 24 hour Service +49 180-500 2203
 e-mail support@rohr-spezialfahrzeuge.com

Replacement parts

Phone +49 9421-7305 100
 e-mail parts@rohr-spezialfahrzeuge.com