

TDT temperature controlled drawbar trailer

The drawbar trailer is the classic addition to the tractor unit. With its steel sandwich-type cooling body, the turntable drawbar trailer wins over customers with its excellent insulating properties. The trailer can be operated independently of the tractor unit as a "stationary cold store". Its autonomous cooling unit and temperature recorder ensure that the cold chain is maintained even when the tractor unit is in use elsewhere. Its outstanding handling, even with uneven loading, ensures additional safety. The optional equipment for the turntable drawbar trailer also offers the advantage of flexible goods logistics for foodstuff transport.

Technical data

Permissible total weight	18,000 kg
Axle load:	2x 9,000 kg

Dimensions

Outer box length:	6,700 - 7,800 mm
Outer box width:	2,600 mm
Inner box width:	2,500/2,460 mm
Outer box height:	2,200-2,850 mm

Element widths:

Front wall:	50 mm
Side walls:	45/65 mm
Roof:	85/125 mm
Floor:	100/125 mm



TRG



TDT

TCT



TST

TDT temperature controlled drawbar trailer

Standard equipment:

Running gear

Frame	welded steel
Axles	proprietary brand with disc brake
Suspension	air suspension with lifting and lowering
Tyres	385/65 R 22.5 or 385/55 R 22.5
Drawbar	Y-shape with 40 mm DIN drawbar eye
Side guards	aluminium, black, anodised
Wheel cover	PVC anti-spray fenders
Chocks	1 pc, plastic

Brakes

Design	EBS 4S/3M; ABS, spring-loaded parking brake, supply connections yellow/red according to EC 17/320
--------	---

Electrical system

Design	24 V with 15-pin plug
Rear lighting	multifunction lights according to EC
Outline marker lights	LEDs with rubber arm
Navigation lights	LEDs, white in front, red in the rear, LED side marker lights

Box

Design	steel sandwich
Front wall	reinforced with cutout for cooling unit
Floor	with 5.5-tonne quiet running aluminium floor
Side wall	with load securing rail
Rear door	stainless steel, glass bead blasted
Roof	with LED ceiling lighting

Cooling unit

Design	front wall or underfloor unit from leading brand-name manufacturers
Fuel tank	plastic, 200 l

Tail lift

Design	standard hoist (2,000 kg) with aluminium platform, completely closing
Battery system	2x 12 V in plastic box

Paintwork

Frame	hot-dip galvanised
Box	coated with RAL 9010

Equipment

Ramming protection	2x roller bumpers
Rear step	screwed and galvanised

Optional equipment (examples):

- Front door with through-loading equipment
- Fixed longitudinal partitions
- Longitudinally adjustable transverse partitions
- Sectional door/rear doors
- Double-decker and load securing systems
- Cold retention systems
- Longitudinally adjustable drawbar
- Centralized electrical distribution cabinet
- Video reversing aid
- Electronic ramp approach aid
- Height level control
- Load securing certificate, DIN EN 12642, Code XL
- ATP certificate
- Temperature recording
- Central lubrication system
- Swivelling rear step
- Spring-loaded roller bumpers

Pneumatically longitudinally adjustable drawbar



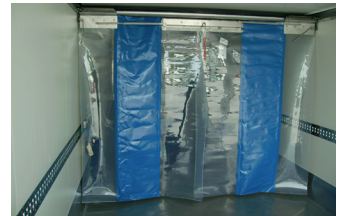
Level control



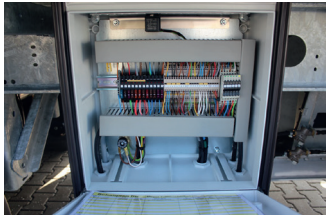
Video reversing aid



Cold retention system



Centralized electrical distribution cabinet



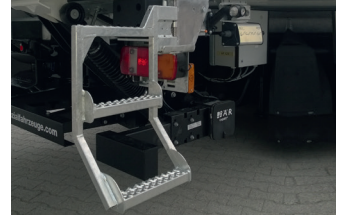
Longitudinal and transverse partitions



Spring-loaded roller bumpers



Swivelling rear step



At ROHR Spezialfahrzeuge, we always work towards our most important goal: consistent, sustainable added value for our customers. We develop and produce our special vehicles according to the individual wishes of our customers and the high standards that distinguish our company from the competition. The competent support provided by our international sales and service network guarantees a high degree of customer satisfaction. Our efficient service centre guarantees flexible, intensive support and ensures the supply of spare and wear parts throughout the entire life cycle of our vehicles.

Customer service

Phone +49 9421-7305 102
24 hour Service +49 180-500 2203
e-mail support@rohr-spezialfahrzeuge.com

Replacement parts

Phone +49 9421-7305 100
e-mail parts@rohr-spezialfahrzeuge.com